



AMA CHARTER 339

FEBRUARY 2008

VOLUME 45 NUMBER 2

### 2008 CRRC OFFICERS

PRESIDENT

*Tony Davids*

978-568-9598

[president\(at\)charlesriverrc.org](mailto:president(at)charlesriverrc.org)

VICE –PRESIDENT

*Howard Hager*

787-587-0375

[Vicepresident\(at\)charlesriverrc.org](mailto:Vicepresident(at)charlesriverrc.org)

MEMBERSHIP SECRETARY

*Ray Harlan*

508-358-4013

[membership\(at\)charlesriverrc.org](mailto:membership(at)charlesriverrc.org)

RECORDING SECRETARY

*Larry Wetmore*

781-449-5358

[secretary\(at\)charlesriverrc.org](mailto:secretary(at)charlesriverrc.org)

TREASURER

*Istvan Sleder*

978-667-1417

[treasurer\(at\)charlesriverrc.org](mailto:treasurer(at)charlesriverrc.org)

NEWSLETTER EDITOR

*Thomas Stammberger*

617-501-7403

[newsletter\(at\)charlesriverrc.org](mailto:newsletter(at)charlesriverrc.org)

RAFFLE CHAIRMAN

*Ken Antonellis*

508-653-8369

[xofficio\(at\)charlesriverrc.org](mailto:xofficio(at)charlesriverrc.org)

WEBMASTER / SAFETY  
OFFICER

*Brian Rickman*

774-249-2494

[webmaster\(at\)charlesriverrc.org](mailto:webmaster(at)charlesriverrc.org)

### GENERAL MEETING

Wednesday  
February 20<sup>th</sup>  
7:30 PM

Club Meetings are at Verizon Labs at 40 Sylvan Road in Waltham. Bring a show and tell, bring a friend or just come alone.

### Guest Speaker Andy Argenio

Andy Argenio is AMA's District I Vice President. He will join our meeting to discuss and provide AMA's perspective on the new Park Flyer category and the associated rules. This will be a great opportunity to share your thoughts, comments and your recommendations.

### RAFFLE

## First Prize

### HotPoint EP ARF

Length : 40.9 inches

Wing Span: 41.2 inches

Requires: Brushless Motor & ESC

4 Servos

Receiver & Radio



## Second Prize

Ken's surprise!

### Table of Contents

Presidents letter .....	2
Treasurers report .....	3
Upcoming Events .....	3
January General Meeting Notes .....	4-9
Special Announcements .....	9
Winter Projects .....	10-13
General Information .....	14
2008 CRRC Membership Application .....	15
Map & Directions! .....	16
Fliers - Upcoming Events .....	17-19

**WON**  
a  
**COOL TOOL**  
for  
**Show-n-Tell**

---

## ***President's Letter***

---



This president's letter is coming to you from over 5000 feet. I am writing it while in Fort Collins, Colorado. My wife, daughter and I are here to visit her family. You heard this similar opening for the letter last July. There were some aviation events going on in July, but not during this visit given the time of the year!

### **Women in Space – 2/1/2008**

I attended the presentation by Pam Melroy and Stephanie Wilson at Wellesley thanks to Tom Bauer informing the CRRC email list about the event. Tom did a presentation at the December meeting about Pam and shuttle mission STS-120. Pam is good friends with Tom and his wife since the days when she was a student at Wellesley (1983 grad). It was a packed auditorium. A lot of people brought their young daughters to see the presentation. Many of these young girls asked very interesting and thoughtful questions during the Q&A at the end. iTunes has the presentation on iTunes U (iTunes U -> Wellesley -> Alumnae Presentations). There was also a 2 minute bloop video that they played that was a lot of fun.

### **Central Mass. RC Modelers – 2/4/2008**

The CMRCM club also has some of the same reservations about the Park Flyer program that we expressed in our last meeting. While attending

their February meeting, they had a similar discussion to ours on the subject. Members also suggested that the district VP, Andy Argenio be invited to speak at their meeting. After the meeting, I spoke to their officers telling them that Andy may speak at our February meeting. I told them that I would let them know when we get confirmation from Andy if they would like to attend for the discussion. The CMRCM club also uses state land for their field as we do at Medfield. They brought up an interesting point about letting Park Flyer AMA members fly at their field. They have shown and provided to the state evidence that they have a certain dollar level of insurance coverage base on the AMA charter status. The Park Flyer AMA membership is insured at a lower dollar value. The CMRCM members expressed some concern over this issue. I am not sure if this could be an issue with our agreement with the state at Medfield. I did see some familiar faces at the meeting, Jack Buckley and Ruane.

### **WRAM Show – 2/22 – 2/24/2008**

I haven't attended the WRAM show in a few years. I hope to attend this year. There are usually club members seeking to arrange a carpool for a day trip to the show. Jack Buckley told me that the FAI team that he is a member of is going to have a booth at the show. They will be selling raffle tickets to help raise money for the team to travel to the world championships later this year in Poland. Please stop by and say hello to Jack and support the team by buying a raffle ticket. I think you could win a trip to Top Gun worth \$800. Florida and spectacular RC planes in the winter, what is not to like about that prize?

I hope everyone is making progress on their winter projects! I am not!

**“Let's be careful out there.”**

***–Tony Davids***

---

## Treasurers Report

---

Report Date 02/11/08

### Starting Balance 01/01/08

Checking	\$4,529.02
Savings	788.47
Cash Box	\$25.00
PayPal Acct	\$0.00
CD Accounts	\$6,452.61
<b>Total Starting</b>	<b>\$11,795.10</b>

### Income

Transfer from PayPal account	\$110.76
Dues	\$645.00
Interest - Savings	\$0.20
Interest - CDs	\$18.40
<b>Total Income</b>	<b>\$774.36</b>

### Expenses

AMA Annual Soar In, Check #1559	\$40.00
Bank Service Charge	\$5.00
<b>Total Expenses</b>	<b>\$45.00</b>

### Ending Balances

Checking	\$5,244.78
Savings	\$783.67
Cash Box	\$25.00
PayPal Acct	\$69.31
CD Accounts	\$6,471.01

<b>Grand Total Ending 01/31/08</b>	<b>\$12,593.77</b>
------------------------------------	--------------------

*-Istvan Sleder, Treasurer*

---

## **UPCOMING EVENTS**

---

**Wednesday 2/20**

**CRRC Guest Speaker: Andy Argenio**

Andy Argenio was first elected as Vice President of AMA's District I in 2004. AMA District I includes Connecticut, Maine, Massachusetts, New Hampshire, Rhode Island and Vermont. With his team of Assistant VPs, he leads meetings to identify and discuss the challenges and opportunities that the district and AMA face. His goals and objectives include promoting aero-modeling, providing flying site assistance, web

site development, and implementing education and safety programs.



With over 125 clubs the AVPs and he have been to numerous club meetings to address emerging problems. He frequently attends club meetings to answer AMA questions, provide advice or information, and settle disputes or present awards.

In 2007 his organization sponsored four events in different geographical areas to bring more clubs and members together for what it's all about; friendship, flying and fun.

On Wednesday, Andy will talk about AMA's new Park flyer category and regulations.

**Friday 2/22 & Sunday 2/24**

**40<sup>th</sup> Annual WRAM Show**

[http://www.wram.org/show\\_details.html](http://www.wram.org/show_details.html)

*See flyer in the back!*

**Week of 2/25**

**Lazy Loopers Flying Club - Indoor Electric Funfly at Franklin High's Field House**

Funfly will take place either on 2/27 or 2/28.

Please R.S.V.P. before 2/25 to confirm your attendance by sending an email to Raja Bortcosh at [rajabortcosh@yahoo.com](mailto:rajabortcosh@yahoo.com)

**Saturday 3/2**

**Cape Ann R/C Club Auction**

<http://www.carcmc.org/Auction-2008.pdf>

*See flyer in the back!*

**Saturday 3/8**

**CPAA 28<sup>th</sup> Annual Radio Control Flea Market**

[www.cpaa.us](http://www.cpaa.us)

*See flyer in the back!*

## **General Meeting Minutes for January 16, 2008.**

### **Business Meeting**

President Tony Davids opened the business meeting at 7:55 PM at Verizon Labs. The Secretary and Treasurer's reports were approved as written and published in the January CRRC newsletter.

### **Field Reports**

Bill Martin Field in Medfield was reported open and flyable the weekend prior to Monday's snowstorm.

Sudbury's Davis Field had lots of activity prior to the big storm, with the most notable event being the Frozen Finger Fun Fly ringing in 2008 as was reported in the January newsletter. There were fifteen flyers in attendance, with as many as eight planes in the air at one time. Hotdogs and refreshments were available courtesy of Ken Antonellis and his wife.

### **Membership Report**

Ray Harlan reported that the 2008 membership roster now stands at fifty-one. You have until March 1st to take advantage of the \$5 early-bird membership discount. After March 1st, the rate goes up to \$45.



### **Board of Directors Volunteer**

Jon Leehey volunteered to attend the January board of directors meeting as a member-at-large.

### **Old Business**

Dick Williamson reports that Sudbury continues to debate the future of Davis Field. Although last year's completion of Lincoln-Sudbury High's athletics fields took the pressure off, Davis Field is still being considered to answer the growing need for organized sports programs. Hats off to Dick for representing CRRC to the town of Sudbury, and for keeping a watchful eye over this valuable resource.

### **New Business**

Ray Harlan reported that the Middlesex County R/C Flyers 17th Annual Auction will be held on Sunday, January 28, 2008, in Billerica. Tony Davids offered to send out the auction flyer via email.

Tony Davids and Tom Stammberger discussed the status of the Verizon Labs construction and how it might impact the location of our monthly meetings. Verizon Labs is undergoing a major demolition and renovation project. Conversations with our Verizon host Jesse Hefter suggested that we might not be able to meet at Verizon Labs beyond March. Dick Williamson offered to check with the Sudbury Library (where the board of directors meet) as an alternate meeting location, and Tom Bauer will check with Wellesley College as a second alternate. January's meeting was moved to the cafeteria due to an auditorium scheduling conflict. The cafeteria lacks a video projector and Anker Berg-Sonne offered to supply one if needed.

*(Note: Following the meeting, email exchanges with Jesse indicate that Verizon Labs will continue to be available through the end of the year, provided we are flexible to use the smaller cafeteria space when the auditorium is unavailable.)*



*Editor's Note: By the time this Newsletter was created we were informed that the February 20<sup>th</sup> club meeting will be our last meeting at the Verizon facility. Please read the "New Meeting Location" section for further information.*

Tony Davids addressed the AMA's Park Flyer Program as announced in the January issue of Model Aviation. The goal of the Park Flyer Program is to entice Park Flyer Pilots to join the AMA at a reduced annual dues cost of \$29.95. Park Flyers are qualified as having a weight two pounds or less, and incapable of reaching speeds greater than 60 MPH. Much discussion followed. Some were concerned that the lack of rules and oversight would create unsafe conditions. Others felt that the Park Flyer Program would be an excellent opportunity to introduce new pilots where they can grow into larger, more complex models, as their skills improve and eventually become full AMA members. Another issue raised was that many of the hand launch planes already in the air at Davis might qualify for Park Flyer status. Anker Berg-Sonne offered to chair a committee to review the issue and how CRRC can best leverage it's position to promote new pilots. Jon Bachman, Alan Marshall, and Len Woronoff also volunteered to participate. The new committee was invited to join the BOD the following week to initiate their discussion.

Winter Project Night. The March General Meeting was declared to be Winter Project Night.

Ruanne Crummett raised a question about introducing a multi-year CRRC membership category. Out-of-state memberships were also discussed. In past years a number of NH flyers, while belonging to their own NH club, joined CRRC to keep informed about contests and the like. It has been suggested that a half-priced membership for out-of-state members be considered. The BOD will take this under consideration.

### **Solos**

No solos were reported this month.

### **Guests**

Three guests joined us this evening. Ken Schwartz, a colleague of Jon Bachman, was interested in the new technologies of planes and electric flight. Tom Edwards, a guest of Dan Harty, is interested in helicopters, but after a recent motor cycle purchase, his helicopter interests will have to take a back seat. Marc Trudeau, our third guest, is a past CRRC hand launch classic competitor, and is interested in renewing his flying skills. Marc is also interested in pattern flying.

### **Raffle Winners**

The first prize for tonight's raffle was a Lama V3 Coaxial Helicopter from E-Sky.



Second prize was an Aero Sky Flyer RC Airplane.



Both prizes were Ready-To-Fly, and suitable for indoor flying, in keeping with the winter season! Jon Leehey won first pick, and chose the Aero Sky Flyer.



Dave Marshall was the lucky second place winner and took home the Lama V3 Helicopter, which coincidentally, was the identical model brother Al had for tonight's Show and Tell.



Richard Gammon was the evening's Show and Tell Cool Tool recipient.

## Show And Tell

Al Marshall demonstrated his new Lama V3 Helicopter from E-Flite. The Lama V3 is a stable coaxial heli that comes complete with a 72 MHz radio. Al gave us a flying demo. Al says the Lama V3 is more docile than the Apache Helicopter he demonstrated at last month's show and tell.



Howard Hager showed us his new Heli-Max Kinetic 50 helicopter. With a 53-inch rotor diameter, it's an impressive looking machine. Howard has run a tank of fuel through the engine and has been practicing his hovering. No indoor in-flight demonstrations were given with this baby tonight!



David Spielman displayed his Hobby Lobby Wingo, which he has outfitted with a Himax 28/12 motor. It has a 5 or 10-foot take-off run, and flies well but slow. David is evaluating other motor options to give it some additional speed.



Marc Trudeau showed us his hand crafted jig for joining a boom and pod for hand launch gliders.



Richard Gammon showed his Inferno 3D Foamy. He added fiberglass tape to the underside of the wing to add some stiffness. It weighs in at 0.8

pounds, according to the Verizon Labs cafeteria scale.



Charley Clerkin showed us his Wing Dragon 4. He has been experiencing problems with the motor cutting out at two-thirds throttle, and was asking for suggestions as to what might be the cause.

Bruce Hammon showed his Sonic Saber Ducted FanJet. It was a present from his wife. Bruce says he has had a lot of helicopter simulator time, but no fixed wing experience, and welcomes any and all advice.





Anker Berg-Sonne brought his very first Supra wing for display. Along with partner in crime Chris Schuch, they plan to build and market this bagged wing to fill a void left by Phil Barnes. Anker will use the first prototype for destructive testing. Anker and Chris already have a waiting list of three potential customers.



### **Guest Speaker**

Howard Hager introduced our guest speaker for the evening, Mr. Bob Rice. Bob is the owner of Hobby USA. Bob purchased the business in 2002, and moved it from Bellingham to Ashland in 2006.



Bob discussed how new technologies have made model aviation smaller, lighter and lower cost. He had two examples of this new technology to prove his point. HobbyZone's Millennium Personal Transport Unit (PTU) and ParkZone's Centurion Cessna 210 both sell for around \$50, complete with 2.4 Ghz radios. Just add batteries and you're ready to fly! Bob also had a HobbyZone Super Cub, which is a little larger aircraft and a better choice for an aspiring pilot. For the helicopter crowd, Bob had a Blade 400 3D and Blade CX2 for display. Bob showed us how well the Blade CX2 can fly in the confined space of a corporate cafeteria.



Bob commented that SS or spread spectrum radio equipment is becoming the radio of choice. SS eliminates frequency conflicts common with 72 MHz equipped aircraft. While the small park flyers are all the rage, the cost of the electronics; battery, motor, and speed control is holding back the availability of larger and faster electrics. As the technology continues to evolve, newer, cost competitive components will bring larger planes to the market place.







Bob discussed his views about the AMA's new Park Flyer program. He expressed concern that the AMA failed to get the assistance of the local flying clubs to co-sponsor the program. Bob promotes club membership to his new customers, to promote safe flying and training. Bob recommends larger size planes like the Super Cub to his new customers, and while they may be a bit more expensive, he feels they are better suited as a trainer. Hobby USA carries spare parts for the Super Cub, and it's a good platform to upgrade with more capable radio gear, and larger motor.



Bob completed his talk by presenting two RTF airplanes, a Super Cub, and Aero Bird 3, as gifts to CRRC. These planes are both easy to fly and will be a great way to introduce electric flight to potential CRRC members and create new customers for Hobby USA. Thanks Bob!

### Meeting Adjourned

The meeting was adjourned at 10:00PM.

- *Larry Wetmore*  
*Recording Secretary*

---

## **NEW MEETING LOCATIONS** **MARCH, APRIL & MAY 2008**

---

After many years, and after our February 20<sup>th</sup> meeting, we will no longer be able to use the Verizon facility. We should take a moment to thank Verizon for having allowed us to use their great facilities and especially Jesse Hefter for all his efforts in helping us secure the meeting room.

The new meeting locations will be:

- **March:** Wellesley College  
(To be confirmed)
- **April:** Goodnow Library, Sudbury
- **May:** Goodnow Library, Sudbury

---

## **NEW LOCK FOR THE** **BILL MARTIN FIELD**

---

Brad Kaye, VP Millis Model Aircraft club informed us that he will be changing the lock to the #4 lock after Millis' Club meeting on February 26th. The lock will be changed on the 27th.

If you have any problems or questions please contact Ken Antonellis at [kxa@verizon.net](mailto:kxa@verizon.net). or Brad Kaye at [flyn3d@yahoo.com](mailto:flyn3d@yahoo.com)

---

## WINTER PROJECTS

---

One would think that weekends with this cold weather are a good time to work on those winter projects. But I find that my fingers crave the controls of my radio, so I must at least get a few hours of flying in every weekend.

What I like is that, despite the cold or approaching snowstorms, there is always someone ready to launch or to take off.



What is even better is that, those who are actively engaged in their winter projects are heading out to Davis Field to embark their new planes on their maiden flights.

### **My Synapse EDF**

In December I got a Receiver Ready GreatPlanes Synapse EDF from my team at work. The best part was that it was the biggest gift under the Xmas tree. My niece and nephew really envied their uncle.

After doing some extensive reading about the plane on different discussion boards, I decided to replace the servos and completed the final assembly. Elevons were set to neutral and throws and dual rates had been properly adjusted. It was time to do some static testing and rev-up the engine.

I noticed a slight vibration. By viewing the plane from the front I noticed that the impeller was wobbling a little. I removed the fan blade and made sure every screw on the blade adaptor was tight. I was not able to remove the adaptor to see if the shaft was bent. I re-assembled and double checked the fan; it was time for a maiden flight.



This picture shows what should have happened. In my case however, it was the opposite. I had a good grip on the plane and brought up the throttle. I did notice the vibration again. But it was too late. The plane had left my hand. It climbed about three feet, made the strangest noise and fell tail first on the snow and ice. No thrust to get into the air. Something was wrong.

I picked up the plane, no apparent damage. I brought up the throttle again and the whole plane felt like a massage vibrator. I could also hear Dave yelling at me: "Cut the throttle". He saw a whole bunch of black pieces coming out of the fan duct.

So much for the maiden flight! Upon preliminary inspection I immediately noticed two issues. The first was that the entire fan unit had moved forward inside the fan duct. It meant that it was not properly glued in place. Remember, my Synapse was supposed to be receiver ready plane.

The second thing I noticed was that the impeller had a much greater wobble than before. I couldn't do much at the field; I had to wait to get home. Good thing that I had brought my WingDragon along. So at least I got a few flights in that day.

When I got home I disassembled the plane and the ducted fan. Remember the initial wobble I noticed during my static testing? Well, the plane came with a bent motor shaft. Yes, I was upset. Whatever happened to quality control? The good news is that I contacted Tower-Hobbies and they sent me a new fan unit. The motor, I had to buy, since I had no way of proving that the shaft was bent out of the box.

I have all the replacement parts, and my Synapse is waiting to be re-assembled. I hope to have it ready in a few weeks

### **My HotPoint EP**

If you remember last year during the April club meeting, I initiated my tradition of buying raffle tickets in bulk quantities. That evening was my lucky night and I won the first prize, a balsa HotPoint EP ARF.



It is important to point out that since that night, and despite all the raffle tickets I have not won another prize. Therefore I can attest that “Buying large number of raffle tickets will not always yield a prize”.

The plane had been sitting in my secret storage place since that night. On weekends I was too busy making my video clips. So time passed, and it wasn't until the December meeting, where I was inspired by Stephen Young's completion of his AeroStar ARF he had won in November, that I decided to finally put my HotPoint EP together.

I found great discussion threads on RC-Groups. I purchased an AXI Gold 2212/20 brushless out-runner and a JETI Advance PLUS 18 amp ESC. For a prop I decided to go with an 8x4. For battery I am using a 3 cell 2070 mAh Lipo. One major change I did was on the landing gear. I used the landing gear of a Mini Pulse XT; a perfect fit. For wheels I used the same 2" wheels that I have on my WingDragon.



Saturday February 02 was the big day. Not only was it my HotPoint EP's maiden flight, it was also my first time flying my own balsa-wood plane.

After a thorough pre-flight and radio check, it was time to get the HotPoint in air. Take-off was great. I only needed a couple of nose up clicks to trim the plane. Ailerons and rudder were right on. I circled the field a few times and also performed some figure eights. Then I climbed a little higher to test the gliding characteristics. It slowly floated down.

I circled the field a couple more times and prepared for landing. I gradually slowed down the plane on down-wind, turned base and then final. I reduced the throttle almost to minimum. My HotPoint slowly descended and did a perfect landing. What a great flight – One happy pilot.



The plane still needs some minor adjustments. I need to properly secure the battery so that I can perform aerobatics and step into the 3-D



maneuver realm. My other projects include: 1) Rebuilding my Synapse and 2) Replacing the tail assembly on my electric EasyGlider and making the upgrade to brushless.

Now that was all about my projects. So what is everybody else working on? Here is a summary taken from the recent YahooGroups postings.

### **Fritz Bien:**

Fritz is working on his ECM Apogee Sport. Lots of colors to choose from



Fritz also has a tight radio installation; he used 2-200maH LiPos in parallel to provide 400maH for all day flying.



### **Rick Pendzick**

Here is a snap-shot of Rick's progress with his 1939 Condor 2M gull wing sailplane. He is still missing the top half of fuse, nose block, and hatch. He will attempt to plank the fuse in mahogany veneer.



He is also finishing his 1931 Gamma 2B. He is waiting for the speed control, and more water slide decals.

Last he is repairing the fuselage of his 2M NES Kestral. The wing popped off during a winch launch.

### **Dan Murphy:**

Dan is finishing up a Sidewinder2 DLG. He promises to show it at the next meeting. His next project will be a Skybench Oly 2S. This will be his first real build of a full size glider. He is psyched to get started.

He is also working on several other projects:

- Stearman: Working on the landing gear
- Spacewalker: Mounted the motor. Working on the tail flying wires and tow release.
- Edge 540: Ready to go, but needs to break in the Moki 180
- Pitts: Converted to electric and solving radio problems
- Fairey Swordfish: Waiting to get a radio freed up to test.

### **Tom Bauer**

Tom is building a Hughes H1 racer from a plan that was in MA about a year and a half ago. The wing span is about 30". The fuse formers and ribs are cut. He is working on the right wing which he

is building instead of buying a foam core. He is just about ready to sheet it with 1/32" balsa. He will probably use the motor and prop from his Mini-Streak. For receiver he is planning to use a Spektrum receiver. He mentioned that he is somewhat nervous with all those cheap 72 Mhz radios being used at Davis.

### **Brian Rickman**

Brian is adding a tiny motor to a Gambler+ DLG. He mounted the motor and found that it was too nose-heavy. He proceeded to shorten the nose. The final weight is about an ounce over the glider version. He expects the plane to climb steeply. He hopes to stay airborne for close to an hour in calm air.

For a second project, Brian is scratch-building a "Blu-Beagle" trainer from EPP sheet foam. The airframe is built. He still has to install the electronics. This is a simple pusher that he hopes will work for giving interested visitors a low-risk turn at the sticks.

### **Jeremy Harkin**

Jeremy has a couple of new fun fly planes on his wet power bench this year. For his first project he is building a stretched Mojo 60 profile. The plane is getting the Saito .90 off his Boxxer biplane. The plane is framed and ready for covering.



For project #2 he has got an OMP 10-300 profile biplane in the box. He is planning to mount a new Saito 1.00.



Jeremy has also made progress on his Sig 1/5 clipped wing Cub. However, he is not sure if he will finish it for this summer.

### **Stephen Vaglica**

Stephen is just finishing his new Multiplex Twister. It is his first EDF (electric ducted fan) powered plane. It's supposed to fly fast, yet fly slow enough on approach for a hand catch. (*Note: That is what they show on the Hobby-Lobby video*)

### **David Spielman**

David just finished a brushless powered Ascent that he purchased at the auction. It replaces the one he crashed last summer. His Multiplex Twin Star II is complete, but needs the radio set up and the props balanced. He also has an Easy Glider on the bench half finished.

### **Jon Leehey**

Jon has been spending all of his time on the rebuilding front. His T-Rex is getting a necessary overhaul. He hopes that when done, it will look just like it did before and like every other T-Rex, he says. If he gets further, he may engage in a plan-built TigerCat. It will be powered by twin Saito 90 size, and will also feature custom retracts and more.

We all look forward to seeing these projects in the upcoming show-and-tells.

*Note: If anyone wants to share their advances on their winter projects in the next newsletter, then simply email me a small write-up and your pictures.*

*- Tom Stammberger / Editor*

## CRRC BUILDING AND FLIGHT INSTRUCTORS

To start your flight instruction; call Brian Rickman, the chief instructor and he will match you with one club instructors. Our instructors are qualified and willing AMA pilots and fellow club members.

See <http://www.charlesriverrc.org> for directions to the flying fields. If you have any questions about the construction of your airplane, or want to have an experienced pilot pre-flight check your airplane before heading to the flying field, then call Brian or any of the building instructors.

### INSTRUCTOR CONTACTS

**Chief Instructor:  
Brian Rickman**

[webmaster\(at\)charlesriverrc.org](mailto:webmaster(at)charlesriverrc.org)  
**774-249-2494**

Power planes are flown only at the Bill Martin Flying Field in Medfield.

#### POWER:

Jeremy Harkin	Waltham	781-894-6683
Jon Leehey	Wayland	508 358 5721
Ruane Crummett	Wayland	508-655-2234

#### ELECTRICS:

Bruce Schneider	Hudson	978-562-9900
Fritz Bien	Concord	978-369-1720
Lincoln Ross	Waltham	781-891-0332
Dick Williamson	Sudbury	978 443-8549
Tom Bauer	Wellesley	781-235-7344

Sailplanes and Electrics can be flown at the Davis Farm Field on Rte. 117 in Sudbury.

#### SOARING:

Dick Williamson	Sudbury	978 443-8549
Dave Walter	Hudson	978-562-5400
Bruce Schneider	Hudson	978-562-9900
Fritz Bien	Concord	978-369-1720
John Nilsson	Clinton	508-368-7136
Ken Antonellis	Natick	508-653-8369
Tom Bauer	Wellesley	781-235-7344

#### HELICOPTERS:

Tony Davids	Stow	978-568-9598
-------------	------	--------------

#### BUILDING:

Fritz Bien	Concord	978-369-1720
John Weigel	Natick	508-653-3560
Derrick Veliz	Acton	978-266-1739
Dick Williamson	Sudbury	978-443-8549
Tom Bauer	Wellesley	781-235-7344

## TREE CLIMBERS, KEYS, MEMBERSHIP & BOARD MEETING

### TREE CLIMBERS

#### Tony Morais

A1 Tree Services-Framingham, MA  
508-626-0088 or 800-657-7788

#### \*Kenny Greeno\*

\*Cell Phone: 617-201-5300  
Office Phone: 617-661-8591

#### Paul Harrington

(508) 376-2573 [Medfield Area]

#### Scott

774-286-1190 [Marlborough]

#### Adam's Tree Service

617-592-5935

\*Highly recommended

### Keys to the Bill Martin Field

To get a Key for Bill Martin Field in Medfield please email Ken Antonellis at [kxa\(at\)verizon.net](mailto:kxa(at)verizon.net). Ken is the key-master. He will send out

instructions as soon as he hears from you. A \$5 deposit is required the first time you receive a key.

Alex of Alex's RC in Belmont also has keys. Show him a club badge to get the key.

### MEMBERSHIP

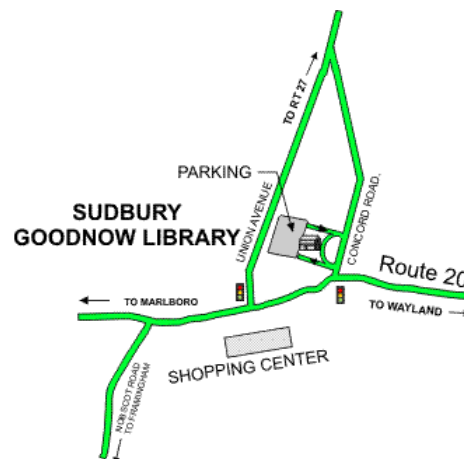
Here are the updated CRRC membership figures. The table summarizes the membership status from 1999 through current month, 2008.

Year	Renewals	New Members	Peak Totals
1999			135
2000	112	62	174
2001	124	50	174
2002	138	58	196
2003	156	40	196
2004	153	42	195
2005	144	20	164
2006	124	26	150
2007	132	32	164
2008	49	7	51

-Ray Harlan

### FEBRUARY DIRECTORS MEETING

The next directors meeting will be, Tuesday, February 26<sup>nd</sup> at 7:30 PM, at the Sudbury Goodnow Library. All club members are invited to attend. Please volunteer to attend at the next club meeting.







## THE CHARLES RIVER RADIO CONTROLLERS, INC

### 2008 MEMBERSHIP APPLICATION

AMA Charter 339

Name \_\_\_\_\_ AMA No. \_\_\_\_\_

Street \_\_\_\_\_ Birth Date (AMA req'd) \_\_\_\_\_

Town \_\_\_\_\_ State \_\_\_\_\_ Zip \_\_\_\_\_ Tel. ( ) \_\_\_\_\_ - \_\_\_\_\_

E-mail \_\_\_\_\_

To receive membership card and field pass, bring this application to a club meeting, or mail to the membership secretary (address below). You can pay by check or use PayPal. (PayPal to [membership\(at\)charlesriverrc.org](mailto:membership(at)charlesriverrc.org))

Make Checks Payable to:  
Charles River RC

<b>MEMBERSHIP CATAGORY</b>	<b>Rates until March 1, 2008</b>	<b>Rates After March 1, 2008</b>
<input type="checkbox"/> OPEN Member	<b>\$40.00</b>	<b>\$45.00</b>
<input type="checkbox"/> JUNIOR member, (under 19 before 7-1)	<b>\$1.00</b>	<b>\$1.00</b>
<input type="checkbox"/> SENIOR member, (if age 60 before 7-1)	<b>\$30.00</b>	<b>\$35.00</b>
<input type="checkbox"/> SENIOR member, (if age 75 before 7-1)	<b>Free if AMA member</b>	<b>Free if AMA member</b>
<input type="checkbox"/> Full time STUDENT	<b>\$20.00</b>	<b>\$25.00</b>
<input type="checkbox"/> Family member additional to OPEN membership	<b>\$20.00</b>	<b>\$25.00</b>

SAVE \$5 - EARLY BIRD DUES RATES ARE LISTED

**Ray Harlan**  
**Membership Secretary CRRC**  
**15 Happy Hollow Road**  
**Wayland, MA 01778**  
**508-358-4013**  
E-mail: [membership\(at\)charlesriverrc.org](mailto:membership(at)charlesriverrc.org)

- ☐ I DO NOT want my address to appear  
in the club phone book

You must be an AMA member in order to  
receive your CRRC membership card.

To receive your newsletter by US mail, please contact Ray Harlan, Membership Secretary at the next meeting. See the newsletter cover sheet for additional contact information.

Help reduce operating costs by receiving your newsletter on line. CRRC pays roughly \$10 per year for each mailed newsletter subscription

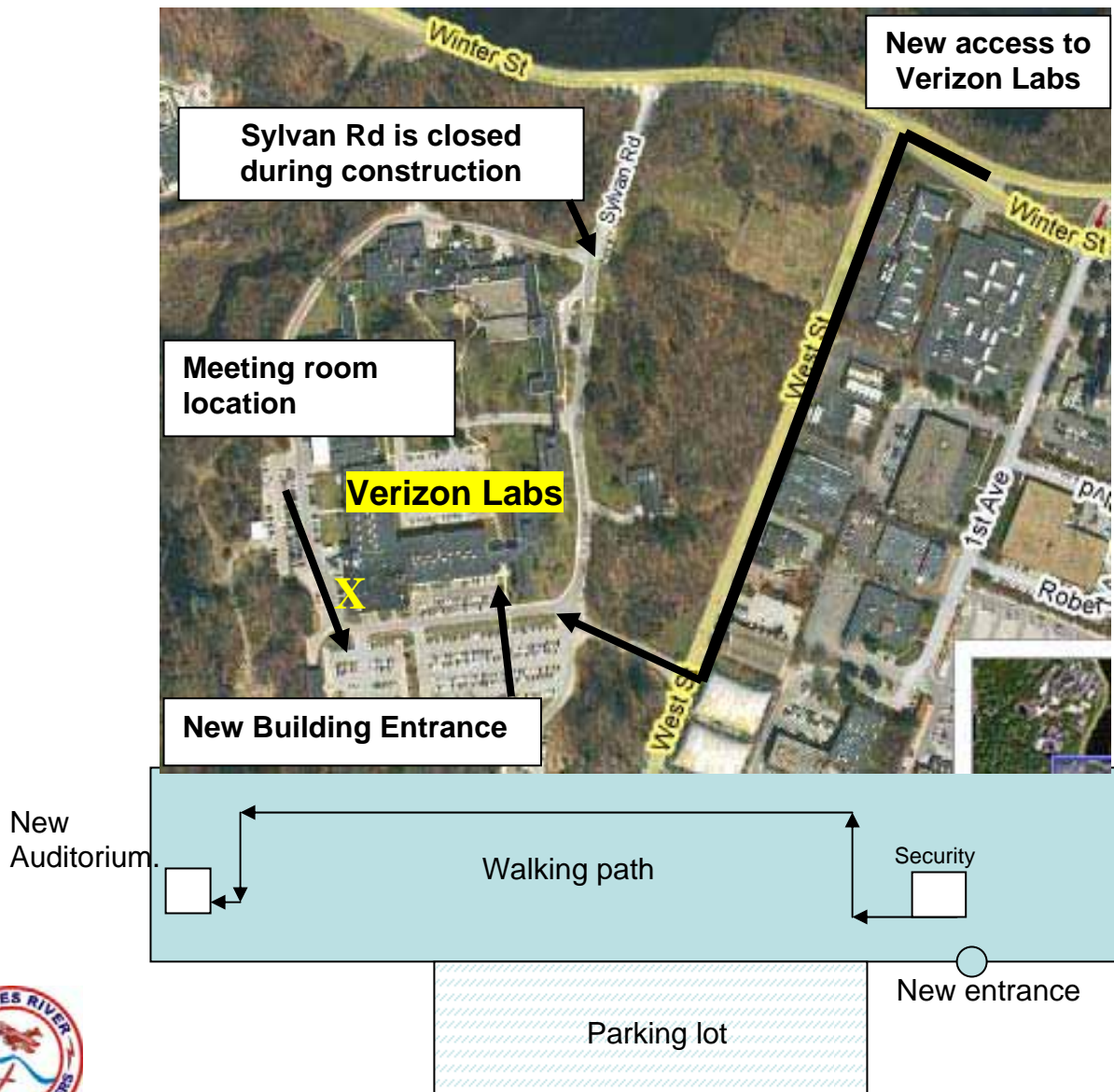
---

## CRRC MONTHLY CLUB MEETING

### Guests are welcome!

---

- When:** Every 3<sup>rd</sup> Wednesday of the month  
Note: Check for the meeting announcement in our monthly Newsletter.
- Time:** 7:30 p.m.
- Where:** Auditorium at Verizon Labs (**LAST MEETING AT THIS LOCATION**)  
40 Sylvan Rd  
Waltham, MA
- Directions:** **New access to Verizon Labs: At the intersection of Winter St. and West St., make a left at the light onto West St. Then take your first right that will lead you to the parking lot.**



Thomas Stammberger  
Newsletter Editor  
Newsletter(at)charlesriverrc.org  
(617) 501-7403

# 40th Annual WRAM Show

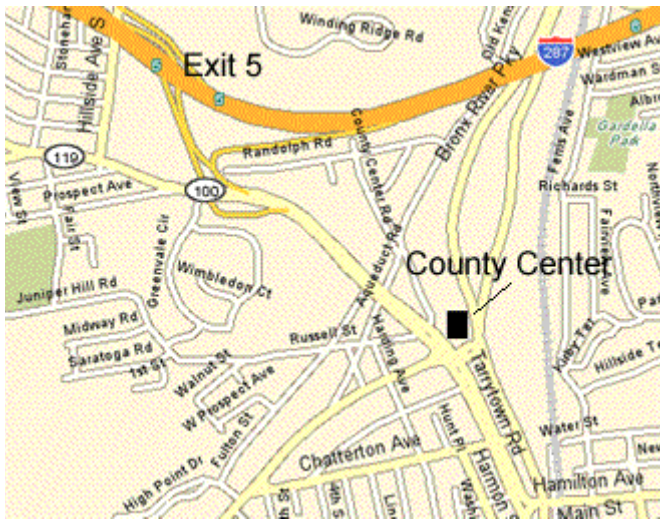
## February 22-24, 2008

---

This page gives summary information regarding the 40th Annual WRAM Show. For a more exhaustive description of the Show and everything it offers, please see our [Main WRAM Show page](#).

Where:

[Westchester County Center, White Plains, New York, Click for detailed directions.](#)



Show Dates:

- Friday, February 22, 2008: 10:00 am to 4:30 pm.
- Saturday, February 23, 2008: 10:00 am to 6:00 pm
- Sunday, February 24, 2008: 10:00 am to 4:00 pm

Booth Fees:

- \$500.00 per booth prior to November 15, 2007
- \$525.00 per booth after November 15, 2007

Public Admission:

- Adults \$12.00 per day
- Children 6 - 11 , \$3 per day
- Under 6 Free
- Sunday , 12 and under Free.



# CENTRAL PENN AEROMODELERS ASSOC.

## 28th Annual Radio Control **FLEA MARKET**

**PLACE:** LEBANON FAIRGROUNDS

Intersection of Cornwall Road  
and Rocherty Road, Lebanon PA

**DATE:** SATURDAY, MARCH 8, 2008

(Regardless of weather)

**TIME:** 9:00 A.M. for General Admission  
7:00 A.M. for Table Renters Only  
Open 'Til 3:00 P.M.

Easy access from  
**PA Turnpike**  
**Exit No. 266**  
(See Map on Back)

**PUBLIC INVITED!**

Admission: \$7.00 Donation (Under 12 Free)  
Tables: \$11.00 each (5 ft. long)  
Wall Tables: \$15.00 each (5 ft. long)

Table  
Reservations  
Recommended!

To Pre-Register for tables,  
send table rent plus \$7 per  
person (payable to CPAA)  
with S.A.S.E. to:

CPAA  
P.O. Box 379  
Enola, PA 17025

**FOR INFO, CALL GEORGE**  
**(717) 412-8579**

**GRAND PRIZE RAFFLE Includes Computer R/C FM Radio!**

**LARGEST R/C FLEA MARKET  
IN THE U.S.A.!**

**41,000 Sq. Ft. Indoors, 602 Tables of Bargains**

...featuring: Radio Controlled airplanes, sailplanes, cars,  
boats, control-line airplanes, and related accessories.



# Sunday, March 2, 2008 Cape Ann R/C Club Auction



**DATE:** MARCH 2, 2008 **WHERE:** VFW HALL,  
ROWLEY MA **WHEN:** SETUP AND PREVIEW NOON  
TO 1:00 PM **TERMS:** 10% OF SELLING PRICE TO  
CLUB. NO EXTRA COST TO BUYER.

**NO CHARGE UNLESS ITEM IS SOLD!**

ANYTHING R/C WILL  
BE SOLD -AIRCRAFT  
OF ALL TYPES  
PREFERRED

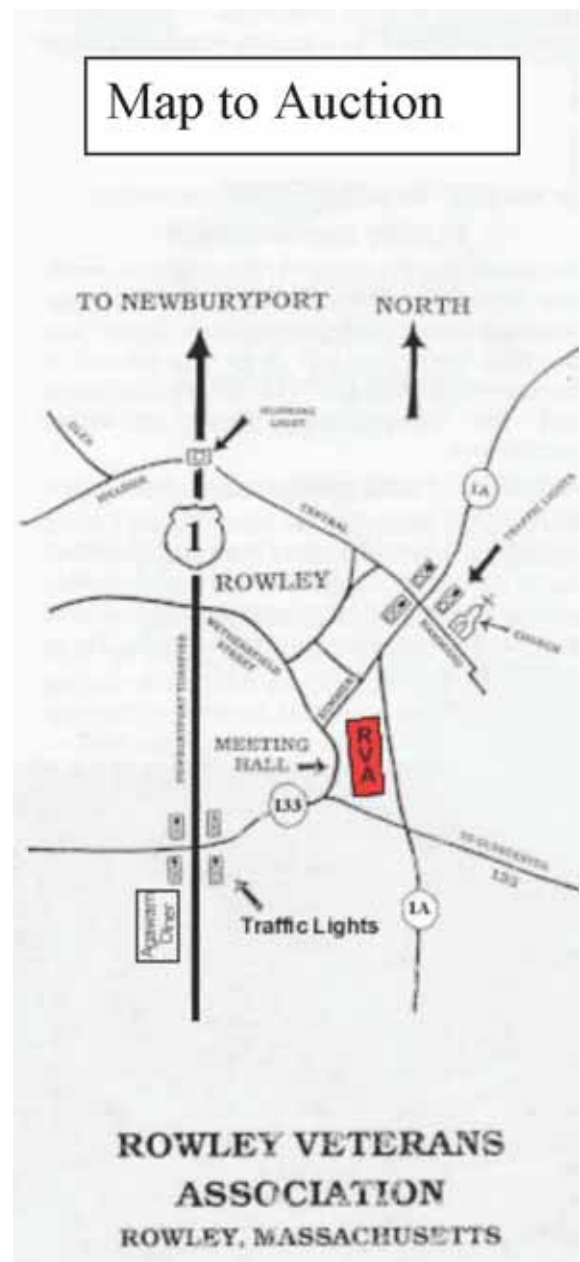


**ADMISSION IS \$2.00**

50/50 RAFFLE -REFRESHMENTS -GOOD  
PARKING AND SEATING

THIS WILL A FAST-MOVING AND FUN  
AUCTION. HELIS, JETS, FIGHTERS,  
TRAINERS WILL BE SOLD. SMALL ITEMS  
WILL BE GROUPED TOGETHER TO MEET  
\$5.00 MINIMUM PRICING.

**INFO:** [www.carcmc.org](http://www.carcmc.org) Steve Gilbert:  
978-346-4346 Ted Wojcik; 603-479-  
3799



**ROWLEY VETERANS  
ASSOCIATION  
ROWLEY, MASSACHUSETTS**