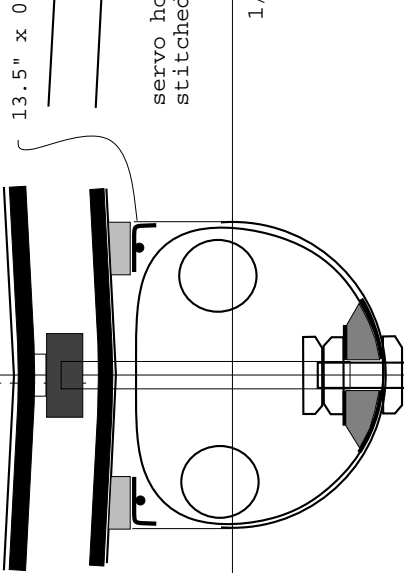


1/4" x 1/2"  
basswood  
side rails



3/16" PC board potted into spar

7.5"

6-32

6-32 Allen-head bolt

flap pushrod: 1/8" hollow

ply bulkhead

maple hook rail

bent 6-32 Allen bolt

4 layers 1.7 oz Kevlar

## 2M Fuselage

9.0mm horn radii

1

2

HS85MG 0.8 oz

HS85MG 0.8 oz

AAA NiMH  
650 mAh  
2.0 oz

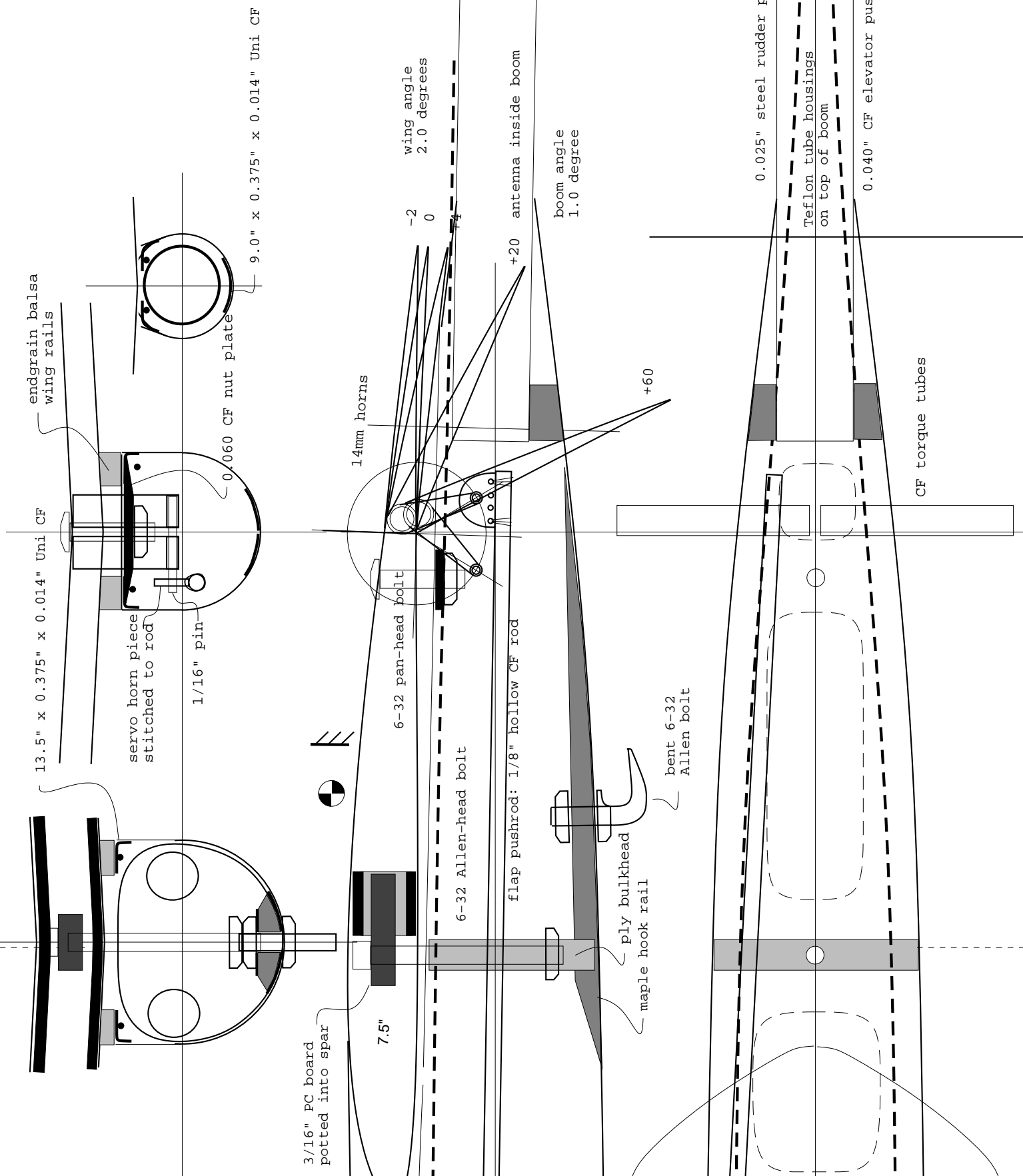
JR 241  
0.3 oz

Fitec 555  
0.8 oz

10mm horn

1/4" x 3/8"  
basswood  
servo rails

switch



endgrain balsa wing rails

13.5" x 0.375" x 0.014" Uni CF

servo horn piece stitched to rod

1/16" pin

0.060 CF nut plate

9.0" x 0.375" x 0.014" Uni CF

3/16" PC board potted into spar

7.5"

6-32 pan-head bolt

6-32 Allen-head bolt

14mm horns

wing angle 2.0 degrees

-2

0

flap pushrod: 1/8" hollow CF rod

+20 antenna inside boom

ply bulkhead  
maple hook rail

boom angle 1.0 degree

bent 6-32 Allen bolt

+60

0.025" steel rudder pushrod

Teflon tube housings on top of boom

0.040" CF elevator pushrod

CF torque tubes